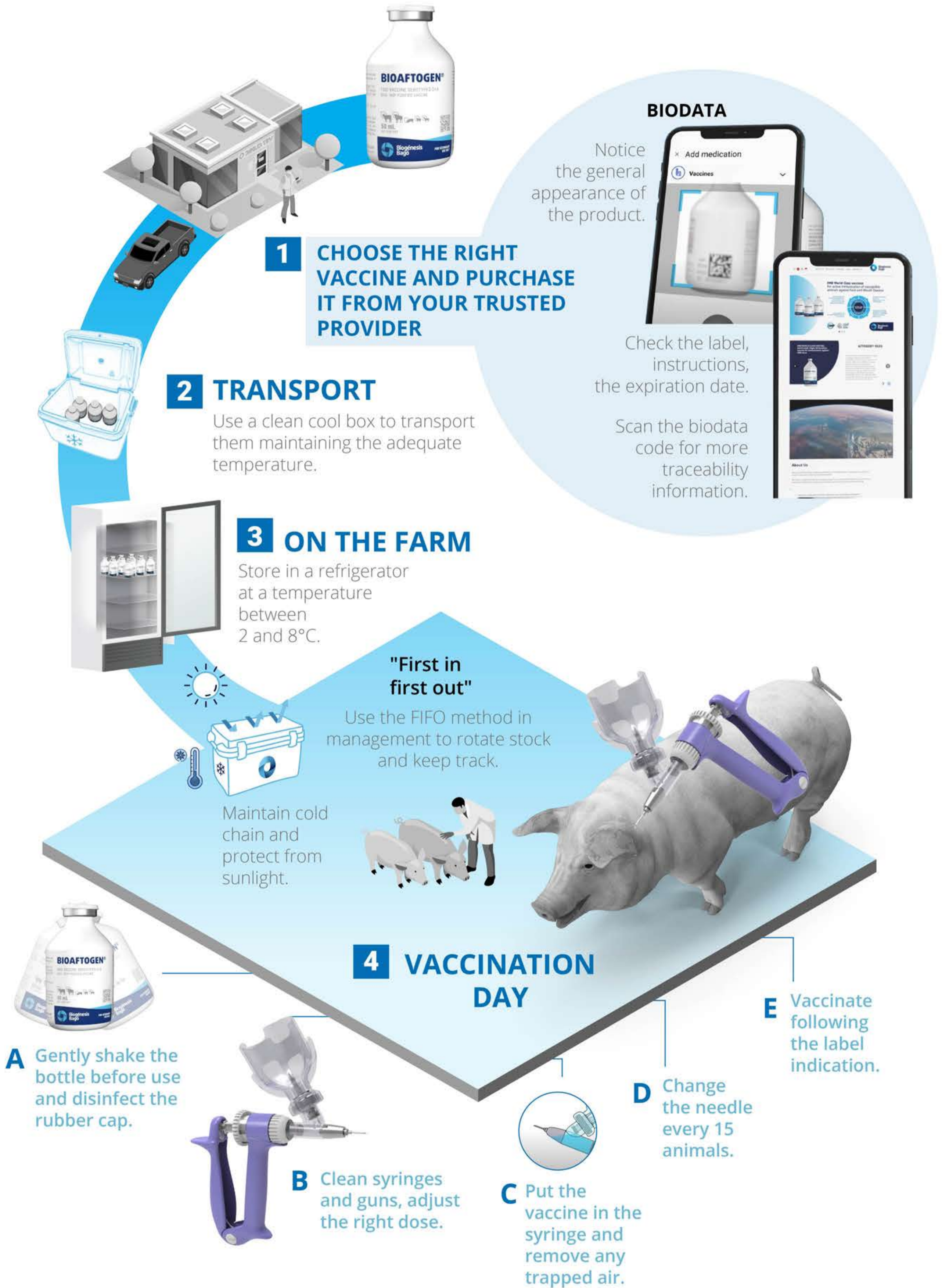


# Guidelines to vaccinate animals

When beginning to plan vaccination, all the staff involved must be trained in terms of good vaccination practices.



## POST VACCINATION CONTROL

Place the unopened bottles back in the refrigerator.



Complete the vaccination form.



Observe the animals for 20 minutes post vaccination.

Clean reusable material, discard disposable material.